

# ALLERGY EMERGENCY CARDS

## GIVING YOU THE HELP YOU NEED IN AN ALLERGY EMERGENCY

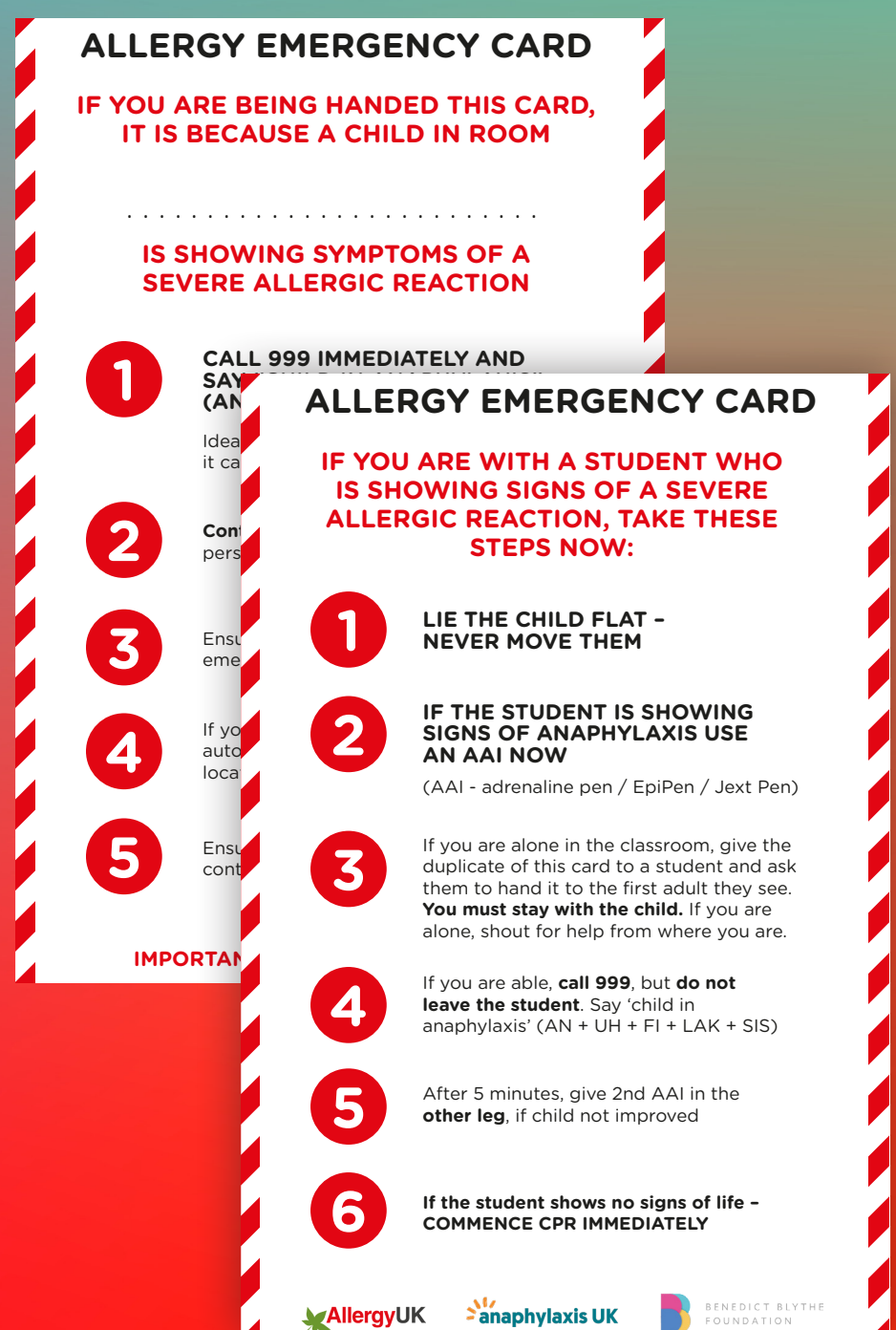
Allergic reactions can happen out of the blue. What do you do if you're alone in a classroom with a student having a reaction and cannot leave them to get help?

Allergy Emergency Cards are placed in each room throughout the school. They are used for an adult to seek extra help when a student is showing symptoms of a severe allergic reaction, without leaving them alone. Remember not all allergic reactions are severe – in those instances treat accordingly. For more severe reactions, use this card.

Each card has two sides.

**SIDE 1: FOR ADULTS REMAINING WITH THE STUDENT** – provides a step-by step on what to do in an allergy emergency, helping guide you.

**SIDE 2: FOR ADULTS BEING GIVEN THE CARD IN AN EMERGENCY** – can be given to the first adult a child sees and gives them immediate permission to act and follow the steps without additional authorisation. They ensure medication is taken to the room, first aiders are contacted, call 999 and contact family – providing immediate support to the adult caring for the student.



For more information and to download a template for additional cards,  
visit [www.benedictblythe.com/AllergyEmergencyCard](http://www.benedictblythe.com/AllergyEmergencyCard)